



A LINE UP OF THE FINEST QUALITY **HOT** + **COLD** WATER PRESSURE WASHERS



INVEST IN QUALITY.

MAKING YOUR JOB EASIER!

SALES • SERVICE • RENTALS

258 W Main St. Leola, PA 17540

www.becopressurewasher.com

717-556-8412

Table of Contents

3	How To Choose A Pressure Washer
4-5	Cold Water Pressure Washers Gas Powered
6	Cold Water Pressure Washers Electric
7-8	Alkota Hot Water Pressure Washers
9	Booster Pumps
10	Pressure Washer Attachments
11	Undercarriage Attachments
12	Beco Equipment Soap
13	Foaming Units
14	Extension Poles/Brushes
15	Hose Reels
16	Hoses
17	Pump Assemblies
18	Gun Assemblies/Lances
19	Trigger Guns
20	Unloaders
21	Switches
22	Igniters/Burners/Fuel Pumps/Filters
23	Water Filters
24	Valves
25	Quick Connects/Swivels
26	Garden Hose Fittings
27	Brass Fittings
28	High Pressure Fittings
29	High Pressure Ball Valves
30-31	Nozzles
32	Vacuum Units
33	Custom Builds/Installs
34	Val6 Heaters
35	Identifying Pump Cavitation

HOW TO CHOOSE A PRESSURE WASHER

What is more important?

PSI (Pressure) or GPM (Gallons per Minute)?

Multiply GPM x PSI = Cleaning Units

Examples:

- 3 GPM x 3000 PSI = 9000 Cleaning units
- 4 GPM x 3000 PSI = 12,000 Cleaning units



Hot Water Coils
7 year
warranty

UNITS OF CLEANING POWER		
GPM	PSI	Units of Cleaning Power
2.0	1600	3,200
3.0	1100	3,300
3.0	2000	6,000
4.0	1800	7,200
4.0	3000	12,000
4.8	1800	12,000
5.0	3000	15,000

ALL OUR PRESSURE WASHER'S STANDARD FEATURES:

- Hose, gun & nozzles
- 50 mesh inlet screen
- Adjustable unloader
- Low oil shutdown
- Dual padded shock absorbing feet
- Chemical injection
- Lifetime warranty aluminum frame
- Thermo-sensor prevents pump from overheating in by-pass mode



Coil Back Pressure Check



1 2 3 4 5

Showing a new coil and the progression of scaling and reduced water flow.

1 = Clean 5 = Clogged

Here is a cross section view showing the progressive liming of coils. A regular maintenance schedule for descaling your heating coil is essential to ensure its longevity. The frequency of descaling depends upon the amount of use and the condition of the water.

Hard water or lime causes coils to clog and it will decrease the life of your pressure washer.

Prevention:

See Scaltrol filter
on Page 23

All our Equipment is Tested and Ready to Go!

COLD WATER

Honda Powered Pressure Washers

Don't see what you're looking for?
Give us a call!
WE CUSTOM DESIGN!



VP Series Cart Direct Drive Pump

Model #	GPM	PSI	Pump	Honda Engine	Price
HV3025	3.0 GPM	2500 PSI	Viper	GX 6.5 HP	
HV4035	4.0 GPM	3500 PSI	Viper	GX 13 HP	



VP Series Cart Direct Drive Pump with Hose Reel

Model #	GPM	PSI	Pump	Honda Engine	Price
HV3025R50	3.0 GPM	2500 PSI	Viper	GX 6.5 HP	
HV4035R100	4.0 GPM	3500 PSI	Viper	GX 13 HP	



VP Series – Belt Drive

Model #	GPM	PSI	Pump	Honda Engine	Price
HVB4035	4.0 GPM	3500 PSI	Viper	13 HP Honda	



VP Series Wagon Direct Drive Pump with Hose Reel

Model #	GPM	PSI	Pump	Honda Engine	Price
HV4035WR100	4.0 GPM	3500 PSI	Viper	GX 13 HP	



VP Series Wagon Direct Drive Pump

Model #	GPM	PSI	Pump	Honda Engine	Price
HV4035W	4.0 GPM	3500 PSI	Viper	13 HP Honda	
HV4035WR50	4.0 GPM	3500 PSI	Viper	13 HP Honda	
HV3025W	3.0 GPM	2500 PSI	Viper	6.5 HP Honda	
HV3025WR50	3.0 GPM	2500 PSI	Viper	6.5 HP Honda	

COLD WATER

Honda Powered
Pressure Washers

MANUFACTURED AND BUILT
BY BECO EQUIPMENT!



HL Series Direct Drive Pump

Pump accepts cold or hot water up to 180°

Model #	GPM	PSI	Pump	Honda Engine	Price
HL3025	3.0 GPM	2500 PSI	Legacy	GX 6.5 HP	



Gas Powered – Belt Drive Pump

Model #	GPM	PSI	Pump	Honda Engine	Price
HGPB5550WR100	5.5 GPM	5000 PSI	General	26 HP Honda-Key Start	



Foam Pressure Washer with Hose Reel

Model #	GPM	PSI	Pump	Honda Engine	Price
HV3025WFR	3.0 GPM	2500 PSI	Viper	GX 6.5 HP	



Tote Belt Drive Pump with Hose Reel

Model #	GPM	PSI	Pump	Honda Engine	Price
THVB4035	4.0 GPM	3500 PSI	Viper	GX 13 HP	

330 Gal. Tote - Fill it & take it where there is no water hookup!



Residential Gas Home Owner Direct Drive Pump

Model #	GPM	PSI	Pump	Honda Engine	Price
HR2530	2.5 GPM	3000 PSI	AR	6.5 HP Honda	

ELECTRIC

Cold Water

Don't see what you're looking for?
Give us a call!
WE CUSTOM DESIGN!



EL2014



ER3025



ER3025S



ER2014C

Electric Powered – Direct Drive Pump

Model #	GPM	PSI	Pump	Electric	Price
EL2014	2.0 GPM	1400 PSI	Legacy	110v 1ph	
EL2014C	2.0 GPM	1400 PSI	Legacy	110v 1ph	
ER2014	2.0 GPM	1400 PSI	AR	110V 1PH	
ER2014C	2.0 GPM	1400 PSI	AR	110V 1PH	
ER3025	3.0 GPM	2500 PSI	AR	220v 1ph	
ER3530	3.5 GPM	3000 PSI	AR	220v 1ph	

OPTIONS:

- Auto shut-off, add (A) after model number (Example EL2014A)
(Machine will shut off when trigger gun is released)
- Letter C indicates hand carry

Wall Mount

Many options available
made to order!



HOT WATER

Pressure Washers
Burner Fuel Fired



Gas Powered Direct Drive Pump



Model #	GPM	PSI	Pump	Honda Engine	Price
4405X4SSD	4.0 GPM	3500 PSI	General	GX 13 HP Honda Key Start	



X4 Hot Water Electric Series



Model #	GPM	PSI	Drive	Electric	Price
430X4X	4.0 GPM	3000 PSI	Belt Drive	220v 1ph	
320AX4X	3.0 GPM	2000 PSI	Belt Drive	220v 1ph	
213AX4	2.0 GPM	1300 PSI	Direct Drive	110v 1ph	



Optional Swivel Wheel Kit



X4 Series Hot Water Gas Powered



Model #	GPM	PSI	Drive	Engine	Price
4405X4SS	4.0 GPM	3500 PSI	Belt Drive	13 HP Honda Key Start	
3255X4SS	3.0 GPM	2500 PSI	Belt Drive	7.5 HP Vanguard Recoil Start	



Optional Swivel Wheel Kit



EN Series Hot Water Gas Powered



Model #	GPM	PSI	Drive	Engine	Price
5355ENL	5.0 GPM	3500 PSI	Belt Drive	18 HP Vanguard	



Portable or Stationary Water Heaters



Can be hooked into any cold water pressure washer
Available in LP, NG, or diesel fuel

Model #	Burner	Electric	Fuel Tank Capacity	Price
360WH	Diesel/Kerosene	110v 1ph	9 Gal.	

Other models & sizes available. Call for pricing

ALKOTA UNITS MADE TO ORDER



STATIONARY HOT WATER HEATERS
• LP, Natural Gas
or Diesel Fired



STATIONARY HOT WATER PRESSURE WASHER
• LP, Natural Gas
or Diesel Fired



TRAILER UNITS



WASH BAY MODEL



**HOT WATER ALL ELECTRIC
NEEDS NO FUEL OR VENT**



STEAM CLEANER

PARTS WASHERS



Call For More Details

BOOSTER PUMPS

MORE THAN YOUR AVERAGE BOOSTER PUMP

POWERFUL WASH-DOWN

12V OR 110V BOOSTER PUMPS

5.5 GPM - 140 & 200 PSI --- Most Popular (other options available)

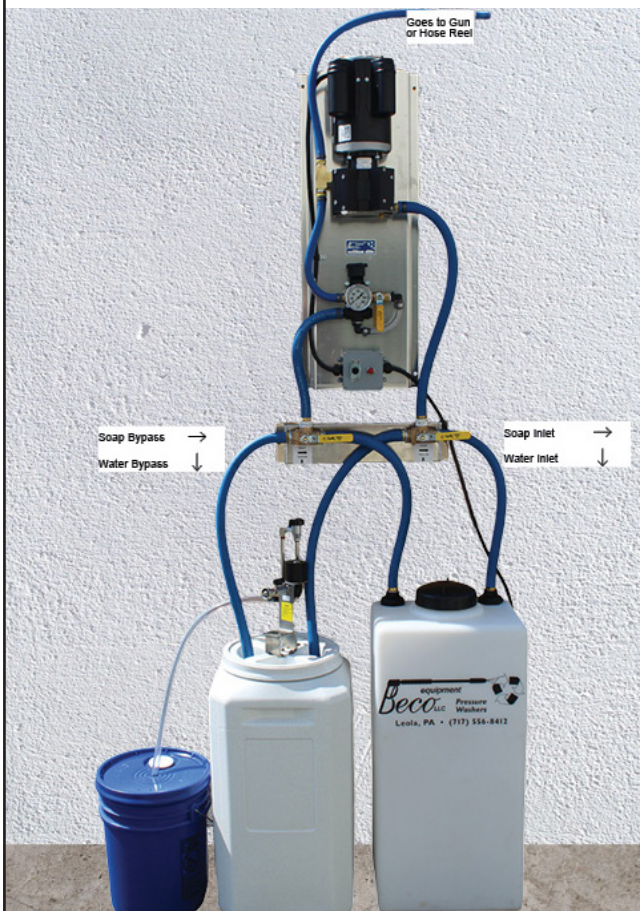
- Use for dog kennels, barns, vehicles & much more
- Even soft washing houses with bleach
- Designed for most any wash-down application

BUILT TO LAST!

Hydro-Minder

No more hand mixing
Disinfectant and Water!

Available in 5 Gallon, 20 Gallon, 55 Gallon.



**WE CUSTOM DESIGN &
INSTALL WASH SYSTEMS**



Portable

#12V55140W

#110V55200W

• 12V 5.5 GPM 140 PSI

• 110V 5.5 GPM - 200 PSI

• 50' Hose on Reel

• Variable Spray Gun

• 35 Gallon Tank



Stationary

#110V55200S

• 110V 5.5 GPM 200 PSI

• 50' Hose on Reel

• Variable Spray Nozzle

• 20 Gallon Tank

WALL MOUNTS AVAILABLE

PRESSURE WASHER ATTACHMENTS

MAKING YOUR JOB EASIER! ATTACHES TO YOUR PRESSURE WASHER.



Stainless Steel Surface Cleaner with Casters

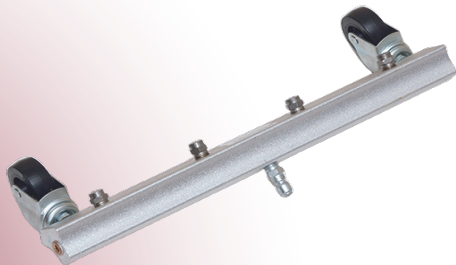
#87535720 - 21"

#87535730 - 24"



#78250 - 8" Stainless Steel Surface Cleaner with Gun only

#78260 - 8" Stainless Steel Surface Cleaner with Gun Wand



Four Nozzle Water Broom

#854061



Industrial Sand Blast Kit

#084079



20" Roof Surface Cleaner

#91129660



15" Roof Surface Cleaner

#91129670

UNDERCARRIAGE CLEANERS



Undercarriage Cleaner
#874933



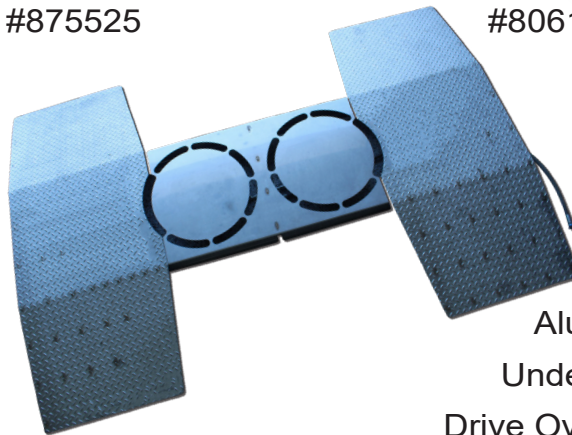
Three Nozzle
Undercarriage
Cleaner
#875525



Stainless Steel High
Lift Undercarriage
Cleaner
#80617



2-in-1
Undercarriage
Cleaner and Surface
Cleaner
#78607



Aluminum
Undercarriage
Drive Over Wash Unit
#258855



- Removes dirt, road grime, snow, sludge & ice without scrubbing
- Easy and fast assembly

BECO EQUIPMENT SOAP

SOAP	1 GALLON	2 1/2 GALLON	5 GALLON	55 GALLON
Super Duty Truck Wash	#258102	#258256	#258506	#258556
Super Duty Truck Wash & Wax	#258101	#258258	#258508	#258558
Super Duty Vehicle Wash	#258103	#258257	#258507	#258557
Super Duty Vehicle Wash & Wax	#258104	#258253	#258503	#258553
Super Duty Degreaser	#258106	#258254	#258504	#258554
Food Grade Degreaser	#258107	#258255	#258505	#258555
House and Siding Wash	#258108	#258251	#258501	#258551
Brighter Aluminum	#258109	#258252	#258502	#258552
Buggy Wash & Wax	#258100	X	X	X
New-Tralizer Undercarriage Wash	X	#258265	#258565	#2585655
Z 10-10 Parts Cleaning Solvents (Liquid)	X	X	#25265	#252655
HA-777 Parts Cleaning Solvents (Powder)	X	X	#25215	#2521155

SOAP APPLICATORS



6 Gallon 12V Sprayer Caddy
#9450252



12V The Buddy Sprayer
#MWS15GT



#301 - 1 1/2 Gallon
#1010 - 2 Gallon Pump Up Sprayer

FOAM CLEANING EQUIPMENT



Wall Mount
Pre-Mixed
#F1WALL



10 Gallon
Battery
Foam Unit
#F110NB



5 Gallon
2 Wheeled
Air Operated
#F15N



2.6 Gallon
Pump Up or
Air Operated
#F100



0.4 Gallon
Pump Up
#F15L



Foam Cannon
Attaches to the
end of lance
#140263



EXTENSION POLES / BRUSHES



Extension Poles and Wands

Extension Poles

- #240 - 2 to 4' Extension Pole
- #480 - 4 to 8' Extension Pole
- #510 - 5 to 10' Extension Pole
- #612 - 6 to 12' Extension Pole



10" Bi-Level
Yellow Brush
#210



10" Bi-Level
Green Brush
#195



10" Yellow Brush
#206



10" Green Brush
#193



2" Flagged
Green Brush
#196



MADE IN USA



NO SPILL GAS CANS



5 Gallon
Gas Can (Red)
#1450



5 Gallon
Gas Can (Yellow)
#1457



2 1/2 Gallon
Gas Can (Red)
#1405



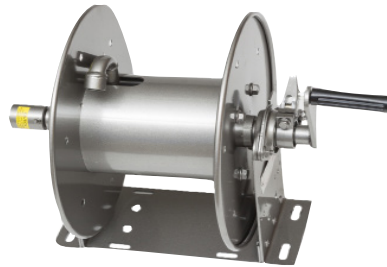
1 1/4 Gallon
Gas Can (Red)
#1415

HOSE REELS

HAND CRANK



Stackable Reel
#981767 3/8" x 100' 4000 PSI
#981768 3/8" x 200' 4000 PSI



Hannay Reel
Hand Crank
#101614 3/8" x 100'
4000 PSI



Retractable Rewind
Hannay Reel
#4722 3/8" x 50'
5000 PSI
#4742 3/8" x 100'
5000 PSI



AP Reel
#252984 3/8" x 100' 4000 PSI
#252988 3/8" x 150' 4000 PSI



Garden Hose Reel
#1041 - 5/8" x 150'



Legacy
Swivels 360°
#5513 3/8" x 100'
4000 PSI

CUSTOM HOSE REELS



12v Reels
110v Reels



Hand Crank Reels
5,000 PSI
10,000 PSI

FULL LINE OF
CUSTOM ORDER
HANNAY REELS
PUSH BUTTON
REWIND

READY TO GO PRESSURE HOSE ASSEMBLIES



(Hose & Gun Swivel) Avoid Hose Tangle see page 25

HIGH PRESSURE HOSES



BLACK 4000 PSI

- #3302 - 3/8" x 30'
- #3502 - 3/8" x 50'
- #3752 - 3/8" x 75'
- #31002 - 3/8" x 100'
- #31502 - 3/8" x 150'
- #32002 - 3/8" x 200'
- #312 - Per Foot



BLACK 6000 PSI

- #5502 - 3/8" x 50'
- #5752 - 3/8" x 75'
- #51002 - 3/8" x 100'
- #51502 - 3/8" x 150'
- #512 - Per Foot

NON-MARKING HOSES



GRAY 4000 PSI

- #3503 - 3/8" x 50'
- #31003 - 3/8" x 100'
- #31503 - 3/8" x 150'
- #35003 - Per Foot



GRAY 6000 PSI

- #5503 - 3/8" x 50'
- #51003 - 3/8" x 100'
- #51503 - 3/8" x 150'

ADDITIONAL HOSES



1/4" PLASTIC HOSE

- #402125 - 1/4" x 25'
with 22mm Ends



INDUSTRIAL WATER HOSE

- #AR11HT50
5/8" x 50'
- #AR11HT100
5/8" x 100'



1/8" SEWER HOSE

- #150963 - 1/8" x 50'
- #150964 - 1/8" x 100'



STEAM HOSE

- #153925 - 3/8" x 25'
- #153950 - 3/8" x 50'

READY-TO-GO PUMP ASSEMBLIES



VIPER RRV

#258P25 - 3 GPM 2500 PSI
#258P30 - 3 GPM 3000 PSI
#258P35 - 4 GPM 3500 PSI



RSV

#330P25 - 3 GPM 2500 PSI
#330P30 - 3 GPM 3000 PSI
#440P30 - 4 GPM 3000 PSI
#440P35 - 4 GPM - 3500 PSI



Vertical AR Pumps

#25G25 RMW 2.2 G24
Aluminum Head 2.2 GPM
2400 PSI $\frac{7}{8}$ " Shaft
Brass Head 2.5 GPM
2500 PSI $\frac{7}{8}$ " Shaft



RMV

#225 - RMV2.G25 2 GPM
2500 PSI $\frac{3}{4}$ " Shaft
#2530 - RMV 25G30D 2.5
GPM 3000 PSI $\frac{3}{4}$ " Shaft

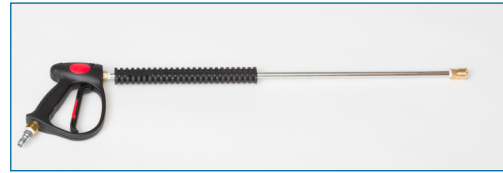


Parts and Service available to all our major pump manufacturers.

GUN ASSEMBLIES & LANCES



#353033 - Suttner Gun Assembly 28" Wand
#353038 - Suttner Gun Assembly 36" Wand



#353055 - MV925 Gun Assembly 28" Wand
#353058 - MV925 Gun Assembly 36" Wand



#352760 - Pressure Relax Gun
Assembly 28" Wand



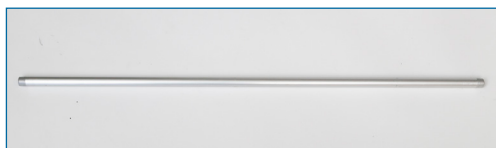
#368154 - 36" Dual Lance
with Soap Nozzle



#368712M - 12" Lance with Grip
#368720M - 20" Lance with Grip
#368724M - 24" Lance with Grip
#368728M - 28" Lance with Grip
#368736M - 36" Lance with Grip
#368748M - 48" Lance with Double Grip
#368760M - 60" Lance with Double Grip
#368779M - 79" Lance with Double Grip



#368312 - 12" Lance without Grip
#368320 - 20" Lance without Grip
#368324 - 24" Lance without Grip
#368336 - 36" Lance without Grip
#368348 - 48" Lance without Grip
#368360 - 60" Lance without Grip
#368378 - 78" Lance without Grip



(Aluminum light weight for extensions)
#6462 - 24" Aluminum Lance
#6463 - 36" Aluminum Lance
#6464 - 48" Aluminum Lance
#6465 - 59" Aluminum Lance
#6372 - 79" Aluminum Lance



#368412 - 12" Stainless Steel Lance with Grip
#368424 - 24" Stainless Steel Lance with Grip
#368428 - 28" Stainless Steel Lance with Grip
#368436 - 36" Stainless Steel Lance with Grip
#368448 - 48" Stainless Steel Lance with Grip
#368248 - 48" Stainless Steel Lance without Grip

TRIGGER GUNS



**Suttner Gun
(Commercial Grade)**
10 GPM
5,000 PSI
300 Degrees
3/8" FPT Inlet
1/4" FPT Outlet
#353015 - Gun
#875190 - Repair kit



Pressure Relaxed Gun
12 GPM
5,000 PSI
300 Degrees
3/8" FPT Inlet
1/4" FPT Outlet
#352219 - Gun
#753016 - Repair Kit



**MV925 Gun
(Residential Grade)**
8 GPM
4500 PSI
320 Degrees
3/8" FPT Inlet
1/4" FPT Outlet
#353050 - Gun
419925 - Repair Kit



Pressure Relaxed Gun
8 GPM
7,300 PSI
300 Degrees
3/8" FPT Inlet
1/4" FPT Outlet
#3587300 - Gun
#202750490 - Repair Kit



Straight Through Gun
12 GPM
4,000 PSI
300 Degrees
3/8" FPT Inlet
1/4" FPT Outlet
#352201 - Gun
#089614 - Repair Kit



**MV925 Gun with
Plastic Lance**
8 GPM
4,500 PSI
320 Degrees
3/8" FPT Inlet
22mm x 14mm F Outlet
#411137 - Gun
#419925 - Repair Kit



**Gun for AP
Surface Cleaner**
6.6 GPM
4,200 PSI
3/8" FPT Inlet
1/4" FPT Outlet
#87535880 - Gun



**Gun for Aluminum
Extension Wands**
10.5 GPM
4,000 PSI
250 Degrees
3/8" FPT Inlet
1/4" FPT Outlet
#410385 - Gun



Stainless Steel Gun
7.5 GPM
8,000 PSI
3/8" FPT Inlet
1/4" FPT Outlet
#258720 - Gun



**Trigger Gun
with Live Swivel
Inlet**
12 GPM
5,000 PSI
3/8" FPT Inlet
1/4" FPT Outlet
#29132 - Gun

PRESSURE WASHER PARTS

UNLOADERS



AR Gymmatic 3
3 to 5.5 GPM
3,650 PSI
1/2" FPT Inlet
3/8" MPT Outlet
#20242 - Unloader
#2611 - Repair Kit



Minamatic
2 to 5 GPM
2,600 PSI
Y/B
1/2" FPT Inlet
3/8" MPT Outlet
#21036 - Unloader w/o soap Ing.
#21039 - Unloader with 1.8 Soap Ing.
#1569207 - 1.8 soap Ing.



VRT 3
10 GPM
3,650 PSI
3/8" FPT Inlet & Outlet
3/8" Bypass Ports
#462337 - Unloader
#462337K - Repair Kit
#462023 - Yellow Spring 2,320 PSI
#462045 - Black Spring 4,500 PSI



Red Knob
VB350
10.5 GPM
5,600 PSI
3/8" MPT Inlet
3/8" FPT Outlet
1/2" FPT Bypass
#463680 - Unloader
#111901 - Repair Kit



VRT 3 with Micro Switch
10 GPM
3,650 PSI
3/8" FPT Inlet & Outlet
3/8" Bypass Ports
#462338 - Unloader
#462338K Repair Kit



Stainless Steel Unloader
21 GPM
6,200 PSI
1/2" FPT Inlet
1/2" FPT Outlet
1/2" FPT Bypass
#462656 - Unloader
#111340 - Repair Kit



GP2124
21 GPM
1/2" FPT Inlet
1/2" FPT Outlet
1/2" FPT Bypass
#462628N - 2,600 PSI
Yellow Spring Unloader
#462629N - 4,500 PSI
Green Spring Unloader
#21512 - Repair Kit



VB130
6.6 GPM
2,300 PSI
3/8" MPT Inlet
3/8" MPT Outlet
3/8" FPT Bypass
#463660 - Unloader



VHP50
26 GPM
8,360 PSI
1/2" FPT Inlet
1/2" FPT Outlet
1/2" FPT Bypass
#VHP50 - Unloader
#258046 - Repair Kit

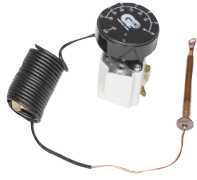


K7
3,000 PSI
3/8" FPT Inlet
3/8" MPT Outlet
3/8" FPT Bypass
#462571 - Unloader K7
orifice 2.9 to 4.2 GPM
#462572 - Unloader K7.2
orifice 4.2 to 6.6 GPM
#462573 - Unloader K7.3
orifice 6.6 to 10.8 GPM
#103070 Repair Kit



VRP175 Unloader
53 GPM
2,400 PSI
1" Inlet
1" Outlet FPT
1" Bypass
#W51034 Unloader

SWITCHES



Remote Thermostat
 16 Amp
 4,000 PSI
 #W430058 - 0-248 Degree
 #W430060 - 0-302 Degree



Adjustable Thermostat
 50-300 Degrees
 #400818 - Thermostat



Flow Switch
 #410308A
 Any Position Flow Switch
 8 GPM - 5660 PSI
 190 Degrees



Pressure Switch
 15 Amp
 110 or 220V
 3,600 PSI
 #411060 - Pressure Switch
 #082022 - Micro Switch Only
 #109400 - Repair Kit

Vertical Mount Flow Switch
 #410305A
 8 GPM - 5,000 PSI
 180 Degrees



Flow Switch
 #410306
 Mount Any Direction
 ST6
 8 GPM - 3,500 PSI
 180 Degrees



Vacuum Switch
 Heavy-Duty
 10A Contact
 140 Degrees
 #413031 - 1.5
 #400761 - 2.0
 #413032 - 2.5
 #400762 - 4.0
 #413034 - 4.5



Cam Switches
 #400735 - 1 Pole 25A 600V off/on
 #400740 - 2 Pole 60A 600V
 Off/Pump/Burner
 #400741 - 1 Pole 35A 600V
 Off/Pump/Burner
 #400743 - 2 Pole 35A 600V
 Off/Pump/Burner
 #400747 - 3 Pole 35A 600V
 Off/Pump/Burner
 #20ML Replacement Knob and Stem



Cam Switch Box
 60 AMP
 1-3 Ph
 240V
 #410206 - Switch Box
 #410207 - Knob
 #410208 - Stem



Time Delay Shutdown
 #252115 - 110V Time Delay Shutdown
 #252240 - 220V Time Delay Shutdown
 #252243 - 230/480 3PH Time Delay
 Shutdown



High Volume Regulator
 53 GPM
 2,600 PSI
 3/4" FPT Inlet
 1/2" FPT Outlet
 #W463705 Regulator
 #W111520 Repair Kit

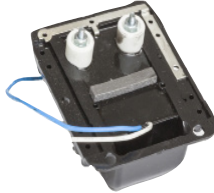
IGNITERS



Wayne Igniter
 #101121 - 110V Igniter
 #101385 - 12V Igniter
 with Flame Sensor



Allanson Igniter Transformers
 220V Side mount
 Catalog 2744
 #079123 Transformer



Allanson
 #6747 240V Igniter



Becket
 #4538 120V Igniter
 #6946 - 12V Igniter
 with Cad Cell

BURNERS/FUEL PUMPS



Suttner Fuel Pump
 #079030 - R.H. 3 GPM 3,450 RPM
 #079033 - L.H. 3 GPM 3,450 RPM
 #6275 - 12/24V DC with Built in
 Solenoid



Burner Motors
 #21699 - 12V 1/7 HP 3,450
 RPM Becket Motor
 #3065 - 12V 3,950RPM
 Wayne Motor
 #1214 - 115V 1/5 HP
 Becket Motor
 #230002 - 120V 1/7 HP 3,450
 RPM Wayne Motor
 #24001K - 220/230 V 1/7 HP
 2,850/3,450 RPM Wayne Motor



Becket Fuel Pump
 #079641 - 120V with Built in
 Solenoid



Suntec Solenoid Valves
 #079062 - 110V Valve
 #079063 - 220V Valve
 #079064 - 12/24V Valve

FILTERS



Fuel Filter
 #400314 - Fuel Filter Assembly
 #4003143 - Stainless Steel
 Filter Element



Fuel Filters
 #341040 - Fuel Filter Assembly
 #341042 - Filter Element
 #078127 - Bottom Bowl Only



In-line Filter
 #33001 - PL Filter
 #341001 PL Filter
 #341002 - Metal

SCALTROL SC-50 WATER TREATMENT SYSTEM



Scaltrol Filter Water Treatment Prevents Coil Clogging in Hot Water Unit

#5040 - SC-50 Water Treatment Canister
#5042- Replacement Cartridge

SPECIFICATIONS:

Water Flow: up to 10 GPM
Maximum Pressure Head and Sump: 125 PSI
Maximum Temperature: Head and Sump: 150 Degrees F.
Line Size 1/2" & 3/4"
Dimensions: SC-50: 4.5" wide and 7.5" tall

WATER FILTERS



Y Strainers

#342004 - 1/4" 50 Mesh
#342006 - 3/8" 50 Mesh
#342007 - 1/2" 50 Mesh
#342008 - 3/4" 50 Mesh
#342009 - 1" 50 Mesh



Water Filter

#4455 - 1" Filter 50 Mesh Screen
#4423 - 1" Filter 80 Mesh Screen
#4445 - Replacement 80 Mesh
#4449 - Replacement 50 Mesh



Clear View Inlet Filter

#347092 - Inlet Filter
#6731 - Replacement Glass
#4057 - Repair Kit



Water Filter

#342106 - 3/8" Filter
#342111 - 1/2" Filter
#342116 - 3/4" Filter
#078208 - Clear Bowl
#078216 - Screen



Tank Strainers

#342306 - 3/8" 50 Mesh
#342308 - 1/2" 50 Mesh
#342312 - 3/4" 50 Mesh
#342316 - 1" 50 Mesh
#342320 - 1 1/2" 50 Mesh

VALVES



Black Float Valve
 #30631 - 3/8" MPT Big
 Black Float Valve
 #300631 - 3/8" MPT
 Big Black Float Valve - Seal
 #8704 - 3/8" MPT Big Black
 Float Valve - Kit



**Diaphragm Plastic
 Float Valve**
 #343007 - 3/4" MPT
 Diaphragm PL Float Valve



White Float Valve
 #343050 - 1/2" MPT White
 Float Valve



Brass Float Valve
 #300620 - 1/2" MPT Float Valve
 #300622 Ball
 #140300 - Rod
 #399620 - Repair Kit



Hudson Float Valve
 #343022 - 1" Float Valve



Soap Injection Adjuster
 #360406 - 1.6 3/8" MPT to MPT
 #360400 - 1.8 3/8" MPT to MPT
 #360401 - 2.1 3/8" MPT to MPT
 #360402 - 2.3 3/8" MPT to MPT



Easy Start Valve
 #339004 - 3/8" MPT 1/4"
 Barb 4000 PSI
 #339005 - 3/8" MPT 1/2"
 Barb 5000 PSI



Soap Injector Non-Adjustable
 #360446 - 1.6 3/8" MPT to FPT
 #360440 - 1.8 3/8" MPT to FPT
 #360441 - 2.1 3/8" MPT to FPT
 #360442 - 2.3 3/8" MPT to FPT



Metering Valve
 #300307 - 1/4" FPT to FPT



Soap Injector Adjuster
 #360426 - 1.6 3/8" MPT to FPT
 #360420 - 1.8 3/8" MPT to FPT
 #360421 - 2.1 3/8" MPT to FPT
 #360422 - 2.3 3/8" MPT to FPT



Thermal Relief Valves
 #100556 - 1/4" MPT with
 1/4" Barb 145 Degrees
 #100557 - 3/8" MPT with
 1/4" Barb 145 Degrees
 #100558 - 1/2" MPT with
 1/4" Barb 145 Degrees



Thermal Relief Valves
 #14014 - 1/4" MPT 140 Degrees
 #14038 - 3/8" MPT 140 Degrees
 #14012 - 1/2" MPT 140 Degrees

QUICK CONNECTS



Brass Quick Connects
 #331057 - 1/4" QC 1/4" FPT
 #331055 - 1/4" QC 1/4" MPT
 #331062 - 3/8" QC 3/8" FPT
 #331060 - 3/8" QC 3/8" MPT
 #331067 - 1/2" QC 1/2" FPT
 #434155 - 1/2" QC 1/2" MPF



Zinc Plated Quick Plugs
 #331157 - 1/4" QP 1/4" FPT
 #331155 - 1/4" QP 1/4" MPT
 #331162 - 3/8" QP 3/8" FPT
 #331160 - 3/8" QP 3/8" MPT
 #331126 - 1/2" QP 1/2" FPT
 #331125 - 1/2" QP 1/2" MPT



Stainless Steel Quick Connects
 #331017 - 1/4" QC 1/4" FPT
 #331018 - 1/4" QC 1/4" MPT
 #331413 - 3/8" QC 3/8" FPT
 #331415 - 3/8" QC 3/8" MPT
 #331417 - 1/2" QC 1/2" FPT
 #454152 - 1/2" QC 1/2" MPT



Stainless Steel Quick Plugs
 #331118 - 1/4" QP 1/4" FPT
 #331117 - 1/4" QP 1/4" MPT
 #331123 - 3/8" QP 3/8" FPT
 #331122 - 3/8" QP 3/8" MPT
 #331128 - 1/2" QP 1/2" FPT
 #331127 - 1/2" QP 1/2" MPT



Twist Couplers
 #331204 - 1/4" MPT 22mm x 14mm
 #331205 - 1/4" FPT 22mm x 14mm
 #331206 - 3/8" MPT 22mm x 14mm
 #331207 - 3/8" FPT 22mm x 14mm
 #331208 - 1/2" MPT 22mm x 14mm
 #331209 - 1/2" FPT 22mm x 14mm
 #5343 - 3/8" FPT 22mm x 15mm



Twist Plugs
 #331304 - 1/4" 22mm x 14mm
 #331305 - 1/4" 22mm x 14mm
 #331306 - 3/8" 22mm x 14mm
 #331307 - 3/8" 22mm x 14mm
 #331308 - 1/2" 22mm x 14mm
 #331309 - 1/2" 22mm x 14mm
 #5184 - 3/8" FPT 22mm x 15mm



SWIVELS



Stainless Steel Swivel
 #58800 - 1/2" FPT x 1/2" FPT
 5,000 PSI
 #4580 - Repair Kit



Brass Swivel
 #4331 - 3/8" FPT x 3/8" FPT 4,000 PSI
 #43315 - Repair Kit



Brass Swivel
 #500404 - 1/2" MPT x 3/8" FPT 5,000 PSI
 #500406 - 1/2" FPT x 3/8" FPT 5,000 PSI
 #500403 - Repair Kit



Brass Swivel
 #1935 - 3/8" FPT x 3/8" FPT 3,000 PSI
 #19351 - Repair Kit



Brass Legacy Swivel
 #911802 - 1/2" MPT x 3/8" FPT 5,000 PSI
 #877610 - Repair Kit



Brass Swivel
 #100053 - 3/4" MPT x 3/8" FPT
 4,000 PSI
 #100888 - Repair Kit
 #2208 - Viton O-Ring
 #8208 - Backup Ring



Brass Swivel
 #4020361 - 3/4" MPT x 3/8" FPT 4,000 PSI
 #4020361 - 1/2" MPT x 3/8" FPT 4,000 PSI
 #40203 - 3/8" MPT x 3/8" FPT 4,000 PSI
 #110025 - Repair Kit



Avoid Hose Tangle High Pressure Swivel goes Between Hose and Gun
 #32564 - 3/8" MPT x 3/8" FPT 4000 PSI
 #32764 - 3/8" MPT x 3/8" FPT 7300 PSI
 #32864 - 1/2" MPT x 1/2" FPT 4000 PSI

GARDEN HOSE FITTINGS



Garden Hose Barb

#140002 - 3/4" FGH x 1/2" Barb
 #140004 - 3/4" FGH x 5/8" Barb
 #140006 - 3/4" FGH x 3/4" Barb



Garden Hose Barb

#140008 - 3/4" MGH x 1/2" Barb
 #140010 - 3/4" MGH x 5/8" Barb
 #140012 - 3/4" MGH x 3/4" Barb



Garden Hose Fitting - Solid

#140028 - 3/4" FGH x 1/2" FPT
 #140030 - 3/4" FGH x 3/4" FPT



Garden Hose Fitting - Solid

#140032 - 3/4" FGH x 1/2" MPT
 #140034 - 3/4" FGH x 3/4" MPT



Swivel

#140052 - 3/4" FGH x 1/2" FPT
 #140054 - 3/4" FGH x 3/4" FPT



Swivel

#140050 - 3/4" FGH x 1/4" MPT
 #140056 - 3/4" FGH x 3/8" MPT



Garden Hose Fitting - Solid

#140036 - 3/4" MGH x 3/8" MPT
 #140038 - 3/4" MGH x 1/2" MPT
 #140040 - 3/4" MGH x 3/4" MPT



Swivel

#1264750 - 3/4" FGH x 1/2" FPT
 with Screen
 #7369 - Garden Hose Washer
 with Screen



Hose Barb Male Adapter

#10242 - 1/4" Barb x 1/8" MPT
 #10244 - 1/4" Barb x 1/4" MPT
 #10246 - 1/4" Barb x 3/8" MPT
 #10262 - 3/8" Barb x 1/8" MPT
 #10264 - 3/8" Barb x 1/4" MPT
 #10266 - 3/8" Barb x 3/8" MPT
 #10268 - 3/8" Barb x 1/2" MPT
 #10284 - 1/2" Barb x 1/4" MPT
 #10286 - 1/2" Barb x 3/8" MPT
 #10288 - 1/2" Barb x 1/2" MPT
 #102812 - 1/2" Barb x 3/4" MPT
 #102108 - 5/8" Barb x 1/2" MPT
 #1021012 - 5/8" Barb x 3/4" MPT
 #102128 - 3/4" Barb x 1/2" MPT
 #1021212 - 3/4" Barb x 3/4" MPT
 #1021682 - 1" Barb x 3/4" MPT
 #1021616 - 1" Barb x 1" MPT



Hose Barb Male Elbow

#1029044 - 1/4" Barb x 1/4" MPT
 #1029064 - 3/8" Barb x 1/4" MPT
 #1029066 - 3/8" Barb x 3/8" MPT



Inlet King Nipples (for gravity feed extreme)

#783114 - 1 1/4" Barb x 1/2" MPT

BRASS FITTINGS



Reducing Connectors

- #320022 - 1/8" FPT
- #320044 - 1/4" FPT
- #320066 - 3/8" FPT
- #320088 - 1/2" FPT
- #320042 - 1/4" FPT x 1/8" MPT
- #320062 - 3/8" FPT x 1/8" MPT
- #320064 - 3/8" FPT x 1/4" MPT
- #320084 - 1/2" FPT x 1/4" MPT
- #320086 - 1/2" FPT x 3/8" MPT
- #3200128 - 3/4" FPT x 1/2" MPT



Hex Bushings

- #322042 - 1/4" x 1/8"
- #322062 - 3/8" x 1/8"
- #322064 - 3/8" x 1/4"
- #322084 - 1/2" x 1/2"
- #322086 - 1/2" x 3/8"
- #3220122 - 3/4" x 1/8"
- #3220126 - 3/4" x 3/8"
- #3220128 - 3/4" x 1/2"
- #3220166 - 1" x 3/8"
- #32201612 - 1" x 3/4"



Couplers

- #330022 - 1/8"
- #330044 - 1/4"
- #330066 - 3/8"
- #330088 - 1/2"
- #330088 - 1/2"
- #33001212 - 3/4"



Reducing Couplers

- #330042 - 1/4" x 1/8"
- #330064 - 3/8" x 1/4"
- #330084 - 1/2" x 1/4"
- #330086 - 1/2" x 3/8"
- #3300128 - 3/4" x 1/2"



Hex Nipples

- #332522 - 1/8"
- #332544 - 1/4"
- #332566 - 3/8"
- #332588 - 1/2"
- #33251212 - 3/4"



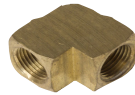
Reducing Hex Nipple

- #332542 - 1/4" x 1/8"
- #332564 - 3/8" x 1/4"
- #332584 - 1/2" x 1/4"
- #332586 - 1/2" x 3/8"
- #3325128 - 3/4" x 1/2"



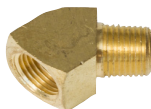
90° Service Elbow

- #340022 - 1/8"
- #340044 - 1/4"
- #340066 - 3/8"
- #340088 - 1/2"
- #34001212 - 3/4"



90° Elbow

- #350022 - 1/8"
- #350044 - 1/4"
- #350066 - 3/8"
- #350088 - 1/2"
- #35001212 - 3/4"
- #3036464 - 1"



45° Service Elbow

- #335022 - 1/8"
- #335044 - 1/4"
- #335066 - 3/8"
- #335088 - 1/2"
- #33501212 - 3/4"



90° Reducing Service Elbow

- #340042 - 1/4" FPT x 1/8" MPT
- #340064 - 3/8" FPT x 1/4" MPT
- #340086 - 1/2" FPT x 3/8" MPT
- #340046 - 1/4" FPT x 3/8" MPT



Tee

- #360022 - 1/8"
- #360044 - 1/4"
- #360066 - 3/8"
- #360088 - 1/2"



Tee

- #37002 - 1/8"
- #37004 - 1/4"
- #37006 - 3/8"
- #37008 - 1/2"
- #37001 - 3/4"



Tee

- #375022 - 1/8"
- #375044 - 1/4"
- #375066 - 3/8"
- #375088 - 1/2"



Cross

- #39502 - 1/8"
- #39504 - 1/4"
- #395066 - 3/8"
- #395088 - 1/2"

HIGH PRESSURE FITTINGS

Couplers



#500022 - 1/8"
#500044 - 1/4"
#500066 - 3/8"
#500088 - 1/2"
#50001212 - 3/4"



Hex Bushing

#540662 - 3/8" x 1/8"
#540664 - 3/8" x 1/4"
#540684 - 1/2" x 3/8"
#540126 - 3/4" x 3/8"
#5406128 - 3/4" x 1/2"
#54061612 - 1" x 3/4"



Tee

#560144 - 1/4"
#560166 - 3/8"
#560188 - 1/2"
#56011212 - 3/4"

Hex Nipple



#540444 - 1/4"
#540466 - 3/8"
#540488 - 1/2"
#54041212 - 3/4"



Reducing Hex Nipple

#540442 - 1/4" x 1/8"
#540464 - 3/8" x 1/4"
#540484 - 1/2" x 1/4"
#540486 - 1/2" x 3/8"
#5404124 - 3/4" x 1/4"
#5404126 - 3/4" x 3/8"
#5404128 - 3/4" x 1/2"



Tee

#56044 - 1/4"
#56046 - 3/8"
#56048 - 1/2"
#560412 - 3/4"

90° Male Elbow



#550044 - 1/4"
#550066 - 3/8"
#550088 - 1/2"
#55001212 - 3/4"



90° Service Elbow

#550244 - 1/4"
#550266 - 3/8"
#550288 - 1/2"
#55021212 - 3/4"



Tee

#560544 - 1/4"
#560566 - 3/8"
#560588 - 1/2"
#56051212 - 3/4"

90° Elbow



#550444 - 1/4"
#550466 - 3/8"
#550488 - 1/2"
#55041212 - 3/4"



45° Male Elbow

#550144 - 1/4"
#550166 - 3/8"
#550188 - 1/2"
#55011212 - 3/4"



Tee

#560244 - 1/4"
#560266 - 3/8"
#56021212 - 3/4"

45° Service Elbow



#550344 - 1/4"
#550366 - 3/8"
#550388 - 1/2"
#55031212 - 3/4"



45° Elbow

#550544 - 1/4"
#550566 - 3/8"
#550588 - 1/2"
#55051212 - 3/4"



Tee

#560344 - 1/4"
#560366 - 3/8"
#560388 - 1/2"
#56031212 - 3/4"

Cross



#565266 - 3/8"
#565288 - 1/2"



Swivel Flared Adaptor

#140444 - 1/4" x 1/4"
#140466 - 3/8" x 3/8"
#140488 - 1/2" x 1/2"



Swivel Flared Adaptor

#140566 - 3/8" x 3/8"
#140588 - 1/2" x 1/2"

HIGH PRESSURE BALL VALVES



High Pressure Ball Valve
 #2517 - 1/4" FPT 7,000 PSI
 #4997 - 3/8" FPT 7,000 PSI
 #4998 - 1/2" FPT 7,000 PSI
 #410099 - Replacement Handle



High Pressure 3-way ball valve
 #4731 - 3/8" FPT 7,000 PSI



Stainless Steel Ball Valve
 #200039 - 3/8" FPT 6,000 PSI



Ball Valve
 #200032 - 3/8" FPT 3,000 PSI



Brass 3 Way Valve
 #437341 - 1/2" FPT
 #4373 - 3/4" FPT



Ball Valve
 #306504 - 1/4" FPT 710 PSI
 #306506 - 3/8" FPT 710 PSI
 #306508 - 1/2" FPT 570 PSI
 #306512 - 3/4" FPT 570 PSI
 #306516 - 1" FPT 570 PSI
 #306520 - 1 1/4" FPT 570 PSI
 #306524 - 1 1/2" FPT 570 PSI
 #306532 - 2" FPT 570 PSI



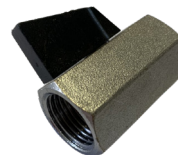
PVC 3 Way Valve
 #306408 - 1/2" FPT
 #306412 - 3/4" FPT



Ball Valve 2000 PSI
 #4101 - 3/8" FPT
 #4102 - 1/2" FPT



PVC Hose Barb
 #306354P - 1/4"
 #306356 - 3/8"
 #306358 - 1/2"



Mini Brass Ball Valve
 #306544 - 1/4" FPT
 #306546 - 3/8" FPT
 #306548 - 1/2" FPT



PVC Valve
 #306445 - 1/2" FPT
 #306450 - 3/4" FPT
 #306452 - 1" FPT

TURBO/SPINNER NOZZLES



PA Cat Spinner Nozzle

#762530	3.0	3650 PSI
#762535	3.5	3650 PSI
#762540	4.0	3650 PSI
#762545	4.5	3650 PSI
#762550	5.0	3650 PSI
#762555	5.5	3650 PSI
#762560	6.0	3650 PSI
#762565	6.5	3650 PSI
#762570	7.0	3650 PSI
#762580	8.0	3650 PSI



PA Cat Spinner Nozzle

#763230	3.0	5100 PSI
#763235	3.5	5100 PSI
#763240	4.0	5100 PSI
#763245	4.5	5100 PSI
#763250	5.0	5100 PSI
#763260	6.0	5100 PSI
#763270	7.0	5100 PSI
#763280	8.0	5100 PSI



Roto Jets

#374143	3.5	5800 PSI
#374144	4.0	5800 PSI
#374145	4.5	5800 PSI
#374146	5.0	5800 PSI
#374148	5.5	5800 PSI
#374150	6.0	5800 PSI
#374151	6.5	5800 PSI
#374153	7.0	5800 PSI
#374156	8.0	5800 PSI
#374158	9.0	5800 PSI
#374161	12.0	5800 PSI



Aqua Rockets

#258030	3.0	4000 PSI
#258035	3.5	4000 PSI
#258040	4.0	4000 PSI
#258045	4.5	4000 PSI
#258050	5.0	4000 PSI
#258055	5.5	4000 PSI
#258060	6.0	4000 PSI
#258080	8.0	4000 PSI

DUO-REG ADJUSTABLE SPRAY NOZZLE







#374030	3.0	3200 PSI
#374035	3.5	3200 PSI
#374040	4.0	3200 PSI
#374045	4.5	3200 PSI
#374050	5.0	3200 PSI
#374055	5.5	3200 PSI
#374060	6.0	3200 PSI
#374060	6.5	3200 PSI
#374070	7.0	3200 PSI





**IN-LINE HIGH PRESSURE
FILTER EXTENDS THE LIFE OF
THE ABOVE TURBO NOZZLES**







#347097 Filter with Quick Coupler
#342040 Filter With 1/4" FPT

NOZZLE TIPS

Quick Connect Nozzles				
				
Angle	0°	15°	25°	40°
3.0	#255120	#255125	#255130	#255135
3.5	#255140	#255145	#255150	#255155
4.0	#255160	#255161	#255165	#255170
4.5	#255175	#255180	#255185	#255190
5.0	#255195	#255200	#255205	#255210
5.5	#255215	#255220	#255225	#255230
6.0	#255235	#255240	#255245	#255250
6.5	#255255	#255260	#255265	#255270
7.0	#255275	#255280	#255285	#255290
8.0	#255320	#255325	#255330	#255335
9.0	X	#255365	#255370	#255375

1/8 MPT Meg Nozzles				
				
Angle	0°	15°	25°	40°
1.0	X	#250099	#257257	X
2.0	#170634	#170635	#170640	#170637
2.5	X	#170639	#170644	X
3.0	X	#170643	#170644	X
3.5	X	#170647	#170648	X
4.0	X	#250145	X	X
4.5	X	X	#170656	X
5.0	X	X	#170660	X
6.0	X	X	#170668	X

1/4" MPT Meg Nozzles				
				
Angle	0°	15°	25°	40°
2.0	#257100	#257105	#257110	#257115
2.5	#257113	#257116	#257119	#257118
3.0	#257120	#257125	#257130	#257135
3.5	#257140	#257145	#257150	#257155
4.0	#257160	#257161	#257165	#257170
4.5	#257175	#257180	#257185	#257190
5.0	#257191	#257200	#257205	#257210
5.5	#257215	#257220	#257223	#257230
6.0	#257235	#257240	#257245	#257250
6.5	#257255	#257260	#257265	#257270
7.0	#257275	#257280	#257285	#257290
7.5	#257300	#257305	#257310	X
8.0	#257320	#257325	#257330	X
8.5	X	#257345	X	X
10.0	#257380	#257385	#257390	#257395
11.0	#257400	#257405	#257410	X
15.0	#257480	#257485	#257490	#257495



1/4" MPT Meg Soap Nozzles
 #257555 - 60 degree 40.0
 #3246 - 25 degree 40.0



Quick Connect Soap Nozzle
 #255905 - 65 degree 40.0
 #255929 - 25 degree 40.0



Sewer Nozzle
 #6210 - 4.5 1/4" FPT
 #6355 - 5.5 1/4" FPT
 #6209 - 6.5 1/4" FPT
 #6352 - 4.5 1/8" FPT
 #6354 - 5.5 1/8" FPT



Rotating Sewer Nozzle
 #2372 - 5.5 1/8" FPT
 #2373 - 5.5 1/4" FPT
 #2374 - 8.0 1/4" FPT

VACTAGON



**TURN A 55 GALLON
DRUM INTO THE
BEST VACUUM
YOU'LL EVER OWN!**

- Electric or Air Operated
- Available in 110V-120V or 220V-240V

**A great portable
dust collector**
Excellent to clean up
your work areas, shop
floors, etc.



VACTAGON

CUSTOM UNITS

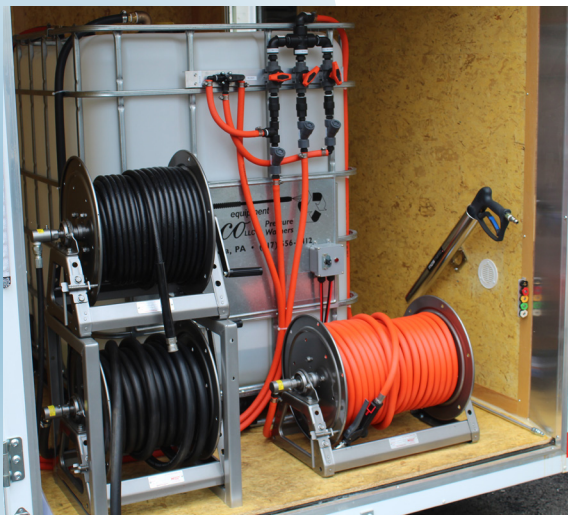


We specialize in
Custom Design
and Installs

**YOUR DREAM
OUR REALITY!**



ON SITE CUSTOM INSTALL



INFRARED HEATER

VAL6

OWN THE SUN

40 plus years of diverse quality, the cleanest most efficient infrared heaters

Clean, quiet, no smoke, no odor, burning diesel fuel



KBE5L2

High 118,000 BTU
Low 100,000 BTU
Our most popular model. Providing sunlight warmth wherever and whenever you need it.



FIR 1300

52,000 BTU
Safer and deeper heat penetration with less intensity. FIR infrared ray and wide radiant heat. Becoming warm from the inside. This heater carries the properties of FIR infrared heaters which by nature are able to penetrate deeper into objects in the same way that sunlight works. Clean exhaust by perfect combustion. Low noise design allows for quiet operation. Non-open flame safety design. Built-in thermostat.



EPX

High 140,000 BTU
Low 111,000 BTU
The most powerful, yet efficient VAL6 ever featuring a 20% larger disk and advanced technology.



KBE5S

111,000 BTU
Our standard model, a smaller version of KBE5L with virtually 100% fuel to energy conversion.



MPX

High 62,500 BTU
Low 55,500 BTU
The MPX's technologically advanced system enables it to serve both convection and infrared.



Daystar

51,800 BTU
An ultra portable heater with dual heating. Perfect for spot space heating in a large area.

Easy on fuel cost | Burns diesel fuel or kerosene
Operates 110V or 12V battery with inverter
Instant heat wherever and whenever

Identifying Cavitation Damage in Triplex Piston Pumps

Insufficient water supply; damage to the high pressure seals will be noticeable, starting at the 12 o'clock position. The high pressure seal farthest from the point of the water supply to the pump will show the most damage, the middle seal may show slightly less damage, and the seal closest to the water may show little to no damage.

Prolonged/Extended Bypass Periods

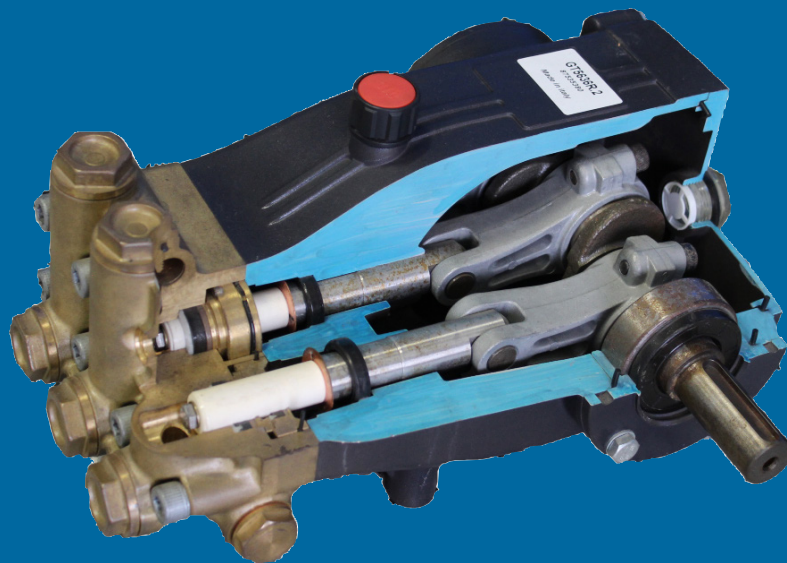
Damage to the high pressure seals will be noticeable starting at the 12 o'clock position and will be equal in damage to all three high pressure seals. (Note: In extreme cases the valve cages may start to distort, change color, and may even show a rainbow coloring of the valve poppet.

Pump Run Dry

Damage will be noticeable to both high and low pressure seals, and will be equal across all three cylinders, and encompass the full inner parameter of the seals. The high pressure seals may also show wear to the outer circumference of the seal. Low pressure seal residue may be present on the plungers, and the high pressure seals may even begin to protrude inward beyond the high pressure seal support ring.

Note:

The severity of damage will depend on the duration in which the seals were subject to a given scenario.



OUR VENDORS WE PARTNER WITH.

DREAM ON. THE POSSIBILITIES ARE ENDLESS.



SALES
SERVICE
& RENTALS



Leading the industry through innovation and quality since 1991

258 West Main Street • Leola, PA 17540 • 717-556-8412

www.becopressurewasher.com